

AAO S.O.P. "Project Comparison Report"

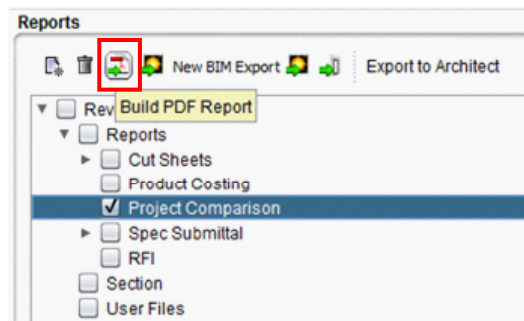
Creating an Openings Studio Project Comparison Report

The Project Comparison Report is designed to highlight the door and hardware revisions, additions, and deletions between two separate versions of an Openings Studio project.

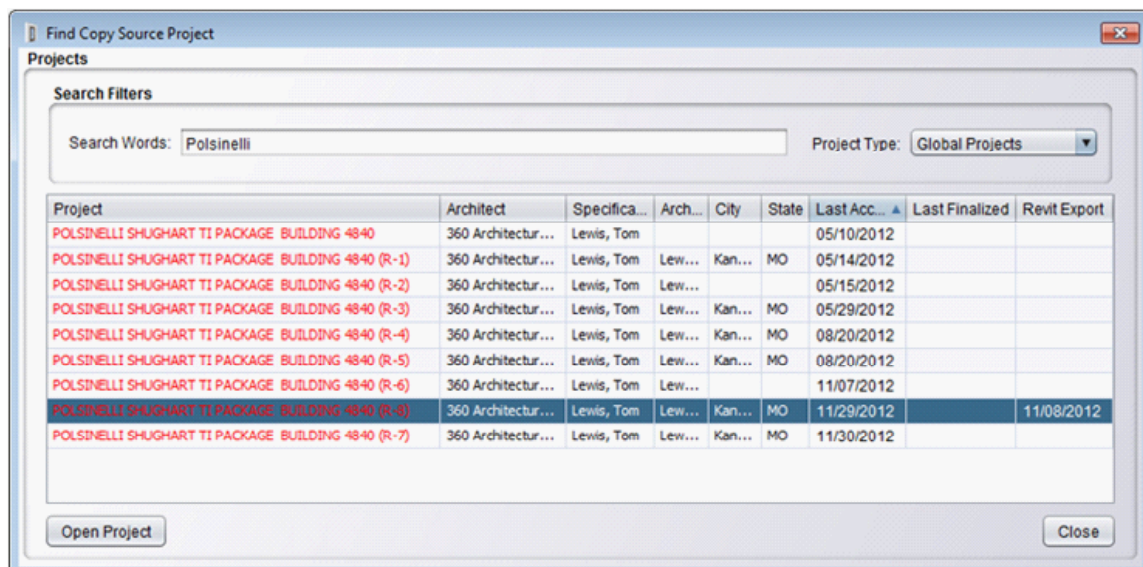
1. In the Navigator panel, select the Project for comparison and go to Reports.



2. Check the Project Comparison box and then click the Build PDF Report icon.



3. In the **Find Copy Source Project** box, use search to find the Project. Select and highlight which version of the project to compare against.



4. Press **Open Project** to display the detailed PDF Project Comparison Report. Reports can then sent to print or saved to the hard drive.

ASSA ABLOY | OPENINGS STUDIO

Door Comparison Report

POINSHELL SHUGHART T1
PACKAGE BUILDING 4840-Revision
7

POINSHELL SHUGHART T1 PACKAGE
BUILDING 4840-Revision 8

Mark Number(s): 917

Curtain Panel	True	False
---------------	------	-------

Mark Number(s): 018B

Door Manufacturer	O	
-------------------	---	--

Mark Number(s): 001, 002, 004

Door Material	Hollow Metal	Wood - Veneer
Door Manufacturer	CU	GR
Door Series	707	GPD
Door Construction	16	PCS
Door Species	CR	PSH
Door Finish Type	Painted	Plain Sliced White Maple
Door Finish Color	Prime	Plain Sliced White Maple 100 Clear

Mark Number(s): 005

Door Material		
Door Manufacturer		
Door Series		
Door Construction		
Door Species		
Door Label		
Door Finish Type		
Door Finish Color		

Mark Number(s): 225

Frame Elevation		
-----------------	--	--

Mark Number(s): 352

Frame Material		
Frame Manufacturer		
Frame Design		
Frame Profile		
Frame Gauge		
Frame Steel Type		
Frame Construction		
Hardware Set		
Frame Type		
Frame Finish Type		
Frame Finish Color		

ASSA ABLOY | OPENINGS STUDIO

Added / Removed Hardware Items

Hardware Set(s): 1.1			
Type Description	Description	Manufacturer	Change
Wall Stop	409	RO	Removed
Hardware Set(s): 15.0			
Type Description	Description	Manufacturer	Change
Door Pull	RM7910 Full Hgt. Mfg-Type 5HD MP	RO	Removed
Pull	RM5270-48 Mfg-Type 13HD	RO	Added
Hardware Set(s): 16.0, 18.0, 36.0			
Type Description	Description	Manufacturer	Change
Door Pull	RM7910 Full Hgt. Mfg-Type 13HD MP	RO	Removed
Pull	RM5270-48 Mfg-Type 13HD	RO	Added
Hardware Set(s): 19.0, 20.0			
Type Description	Description	Manufacturer	Change
Cylinder	63 64 41 LA	SA	Added
Door Pull	RM7910 Full Hgt. Mfg-Type 13HD MP	RO	Removed
Mortise Cylinder	0G2 63 64 41	SA	Removed
Pull	RM5270-48 Mfg-Type 13HD	RO	Added
Hardware Set(s): 27.0			
Type Description	Description	Manufacturer	Change
Door Closer (w/stop arm)	281 CPS	SA	Removed
Door Pull	RM7910-16 Mfg-Type 5HD	RO	Removed
Hinge (heavy weight)	T4A3786 4-1/2" x 4-1/2"	MK	Removed
Kickplate	K1050 10" x 2" LDW 4BE CSK	RO	Removed
Silencer	600	RO	Removed
Hardware Set(s): 28.0			
Type Description	Description	Manufacturer	Change
Door Pull	RM7910-16 Mfg-Type 5HD	RO	Removed
Pull	RM5270-16 Mfg-Type 5HD	RO	Added
Hardware Set(s): 35.0			
Type Description	Description	Manufacturer	Change
Door Pull	RM7910-16 Mfg-Type 6HD	RO	Removed
Pull	RM5270-16 Mfg-Type 6HD	RO	Added