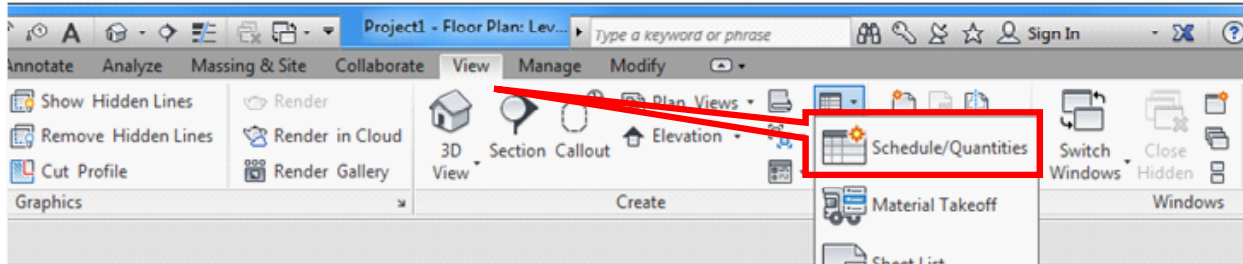


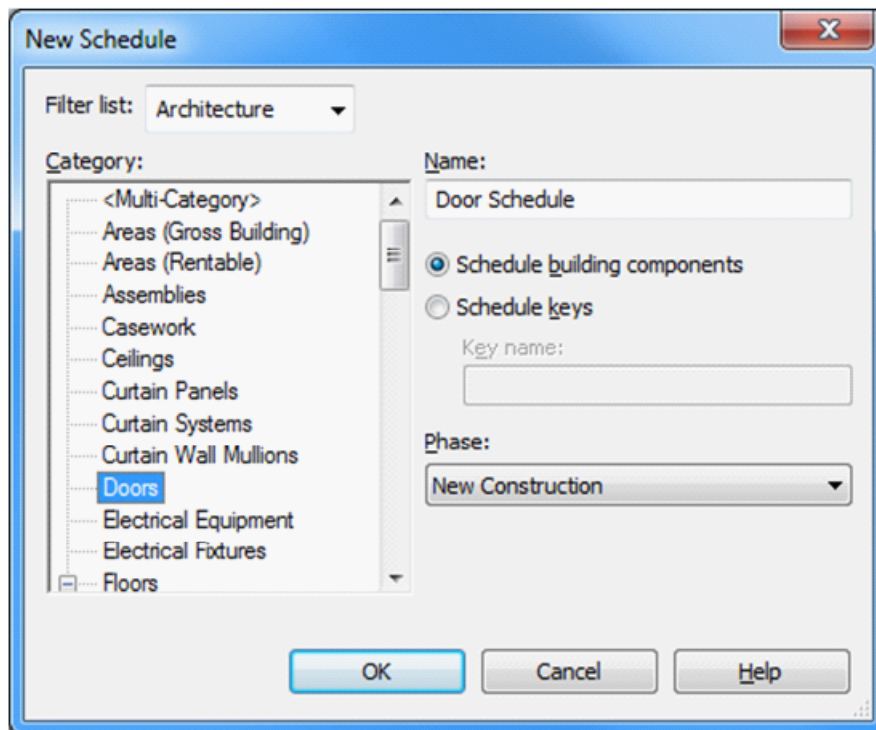
### Creating an Openings Studio Door Schedule

Creating an Openings Studio Door Schedule in your project model follows basically the same steps as creating any standard Revit Door or Window schedule view.

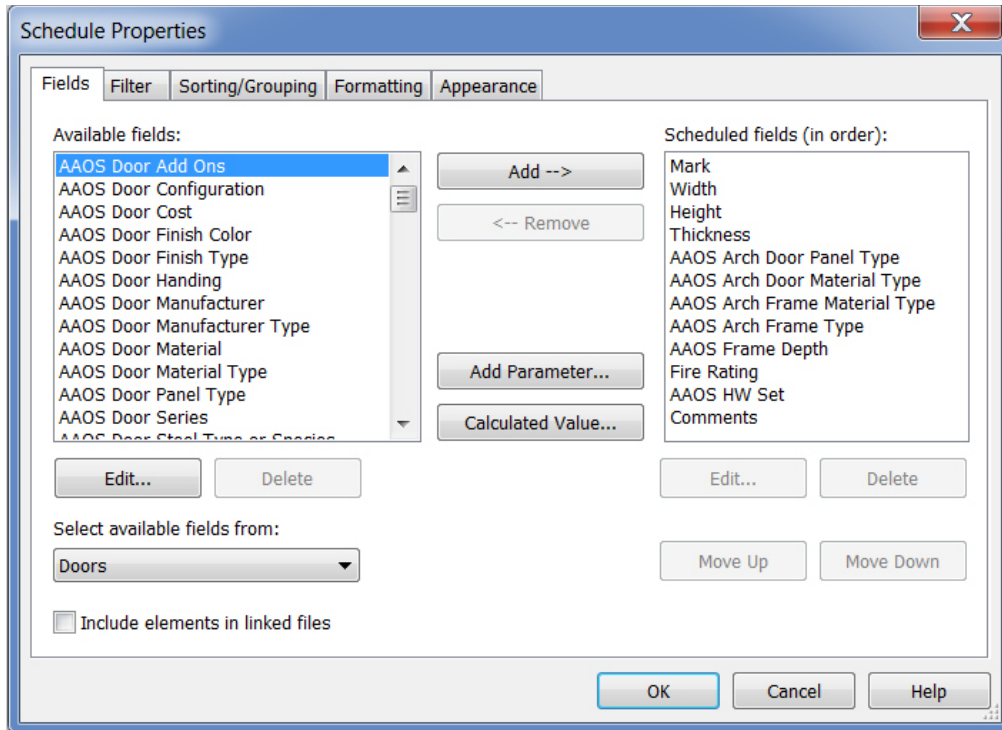
Door Schedules are located under the View tab in all versions of Revit



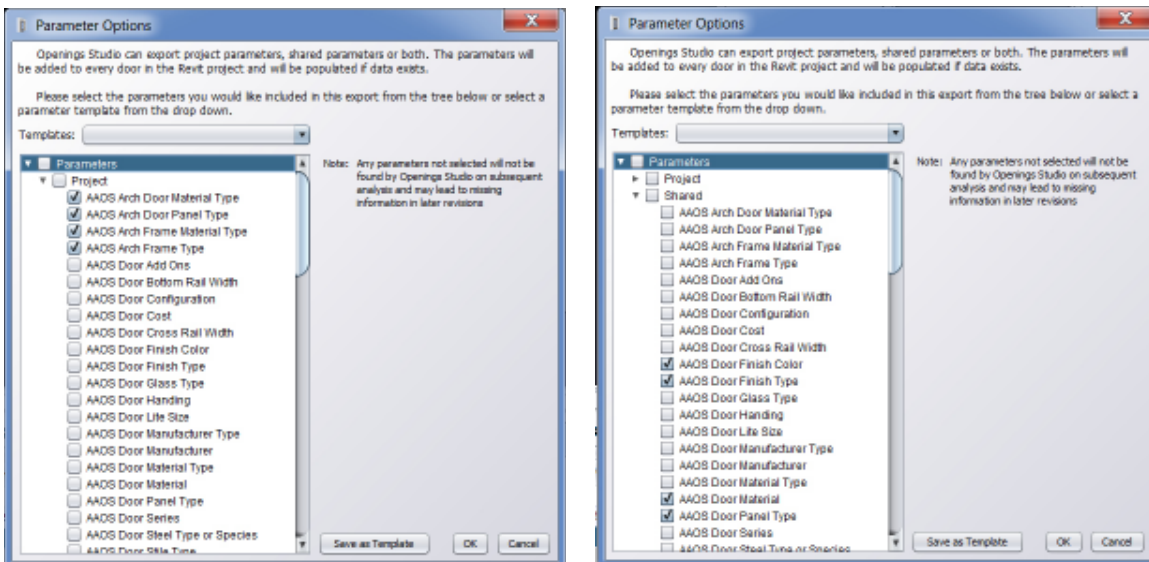
1. Click on Schedule/Quantities to open the New Schedule dialog box. Select **Doors** under the Category. Press OK.



2. In the Schedule Properties dialog box, choose the items you want to view in the Door Schedule columns from the Available Fields on the left and then **Add ->** them to the Scheduled Fields on the right. Their order can be arranged by clicking the **Move Up/Move Down** buttons.



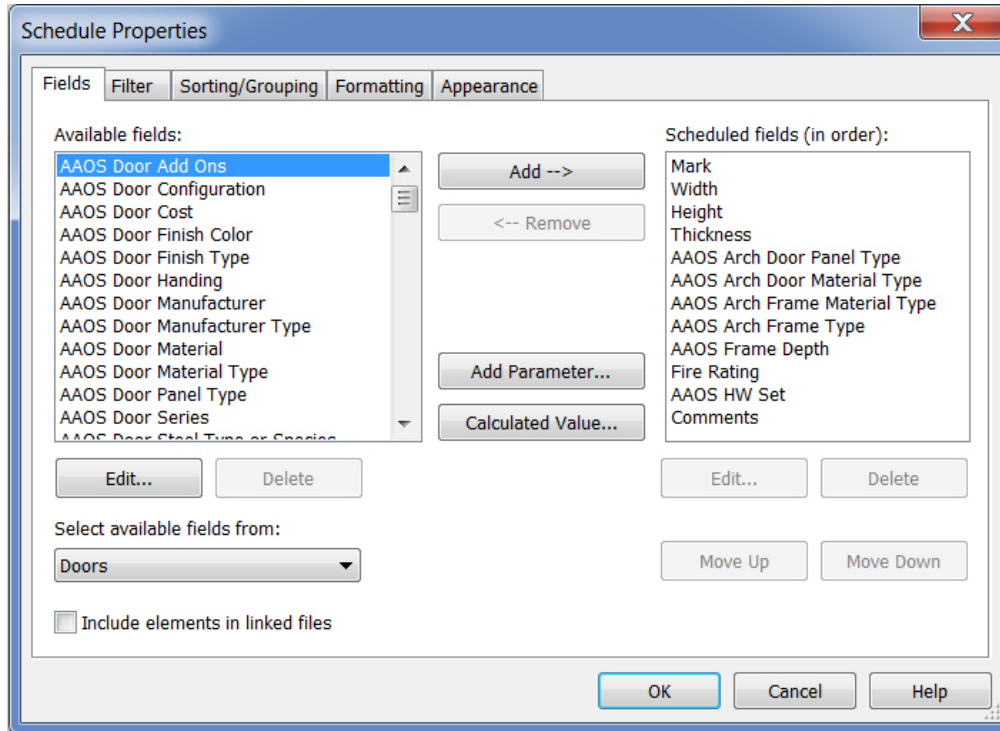
The custom Openings Studio door and frame parameters are prefixed as '**AAOS**'. If you chose parameters to export during the export process because you have custom or want parameters added to your Shared Parameters file, those parameters will be prefixed as '**AAOS Project**' or '**AAOS Shared**'. These fields will contain the same data and information as displayed in the Openings Studio Door and Frame Schedule panel. Below are screen shots of your parameter choices when exporting:



Review the "Exporting a Project" Operating Procedure to find those options (above) on page 4.

**Note:** Parameters used to be prefixed with '**Schedule**' instead of '**AAOS**'. Projects that were in progress before this change will need to make appropriate adjustments. Contact your consultant for help making this change.

AAOS Fields can include any combination of the template Door Family parameters and Openings Studio AAOS parameters listed in Available Fields.

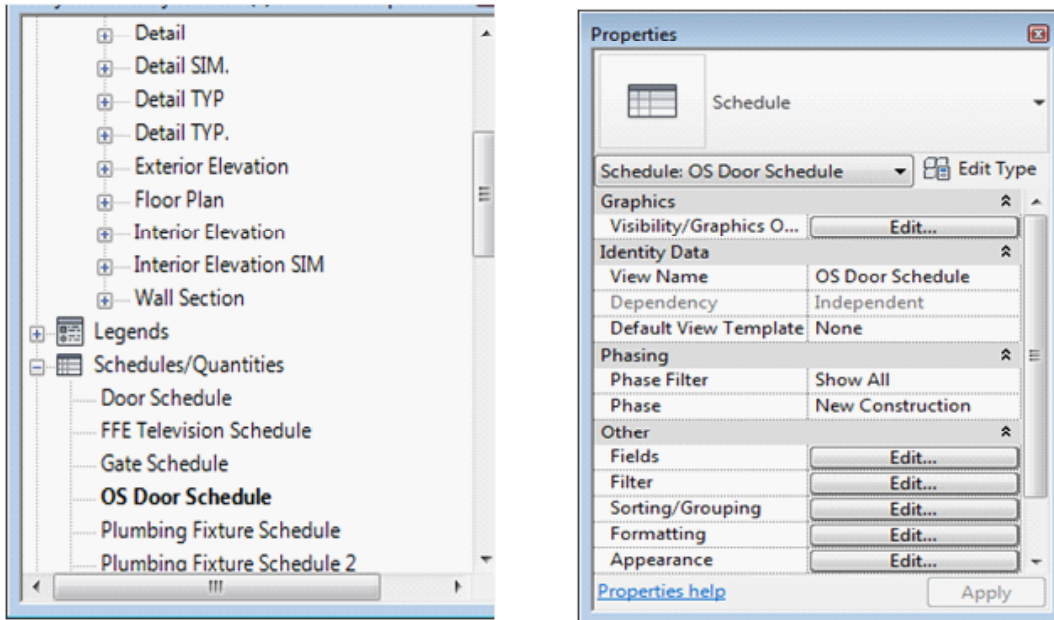


3. When finished choosing the fields to display, press OK. A new Revit Door Schedule is generated and the fields chosen will be populated with data and information if the door families came from Openings Studio. If you have door families in your model that did not come from Openings Studio, the export process may need to take place to add AAOS parameters to all of those doors in the schedule.

The header column names can be clicked on and modified to meet your firm standards as needed. Note that the Hardware Set column will not be populated with the set numbers from Openings Studio until the export process takes place.

OS Door Schedule													
Door Identific	Mark	Width	Height	Door Type	Door Material	Frame Type	Frame Material	Fire Rating	Head Detail	Jamb Detail	Sill Detail	HW Set	
S02.02		7'-0"	8'-0"	AL1	Aluminum		Aluminum - Storefront		16	16		23.0	ASST,CR,DPS,EXT,REX,
S02.04		7'-0"	8'-2"	AL1	Aluminum		Aluminum - Storefront		16	16	15	10.0	DEL,DPS,EXT,
S02.05		3'-8"	7'-2"	F	Hollow Metal	3 Piece	Hollow Metal		14	14	15	09.0	DPS,EXT,
S02.07A		3'-0"	7'-2"	F	Hollow Metal	3 Piece	Hollow Metal		9	9		65.0	
S02.07B		3'-8"	7'-2"	F	Hollow Metal	3 Piece	Hollow Metal		14	14	15	11.0	DPS,EXT,
S02.08		3'-8"	7'-2"	F	Hollow Metal	3 Piece	Hollow Metal		14	14	15	09.0	DPS,EXT,
S03.04A		3'-6"	7'-2"	F	Hollow Metal	3 Piece	Hollow Metal	45 min	9	9		40.0	
S03.04B		3'-6"	7'-2"	F	Hollow Metal	3 Piece	Hollow Metal	45 min	9	9		67.1	CR,DPS,REX,
S03.05		3'-0"	7'-2"	F	Hollow Metal	3 Piece	Hollow Metal	45 min	9	9		41.0	
S03.07		3'-8"	7'-2"	F	Wood - Veneer	3 Piece	Hollow Metal	45 min	9	9		41.1	
S03.08		3'-8"	7'-2"	F	Wood - Veneer	3 Piece	Hollow Metal	45 min	9	9		41.1	
S04.02A		3'-0"	7'-8"	AL1	Aluminum		Aluminum - Storefront		16	16		29.0	DPS,
S04.02B		3'-0"	7'-8"	AL1	Aluminum		Aluminum - Storefront		16	16		43.0	DPS,EXT,
S04.02C		3'-0"	7'-8"	AL1	Aluminum		Aluminum - Storefront		16	16		43.0	DPS,EXT,
S04.02D		3'-0"	7'-8"	AL1	Aluminum		Aluminum - Storefront		16	16		29.0	DPS,

4. Door Schedules can be found in the Project Browser under Schedules/Quantities and the Schedule Properties (Fields, Filter, Sorting/Grouping, Formatting, Appearance) are displayed and can be edited under the Other grouping.



Going forward, the custom Door Schedule fields will automatically be updated with new or revised data and information after each export from Openings Studio. Further information on the Openings Studio Analyzing and Exporting procedures are covered in the AAOS Standard Operating Procedures - "Analyzing a Project" and "Exporting a Project".