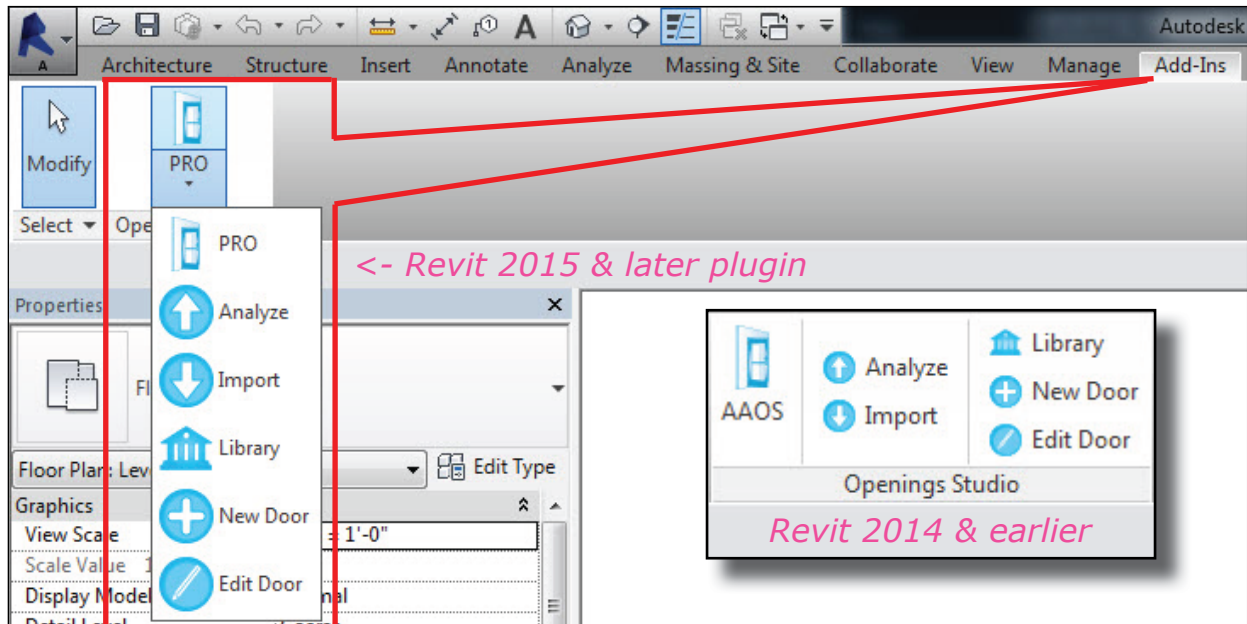


Analyzing a Project into Openings Studio

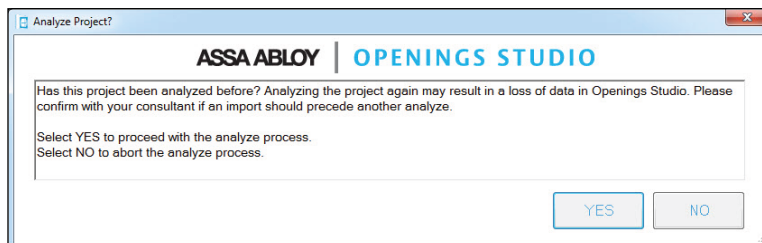
Once the preliminary design and placement of doors and other openings is complete, the Revit building model can be "analyzed". In the Analyze process, all of the various opening types, host wall details, floor plans, and 3D building geometry used in the Revit project will be extracted and then displayed in the Openings Studio Visualizer Panel and Door Schedule. Typically this process will be repeated multiple times as the project progresses through to the Construction Document phase.

Before starting the analyze process, login to Openings Studio, go to Plugins on the top tool bar, and choose the update for your Revit version. A dialog box will appear indicating you have successfully updated. Revit must be closed to perform an update.

1. With a project open in Revit, go to the Openings Studio plugin under the Add-Ins tab and select 'Analyze'.

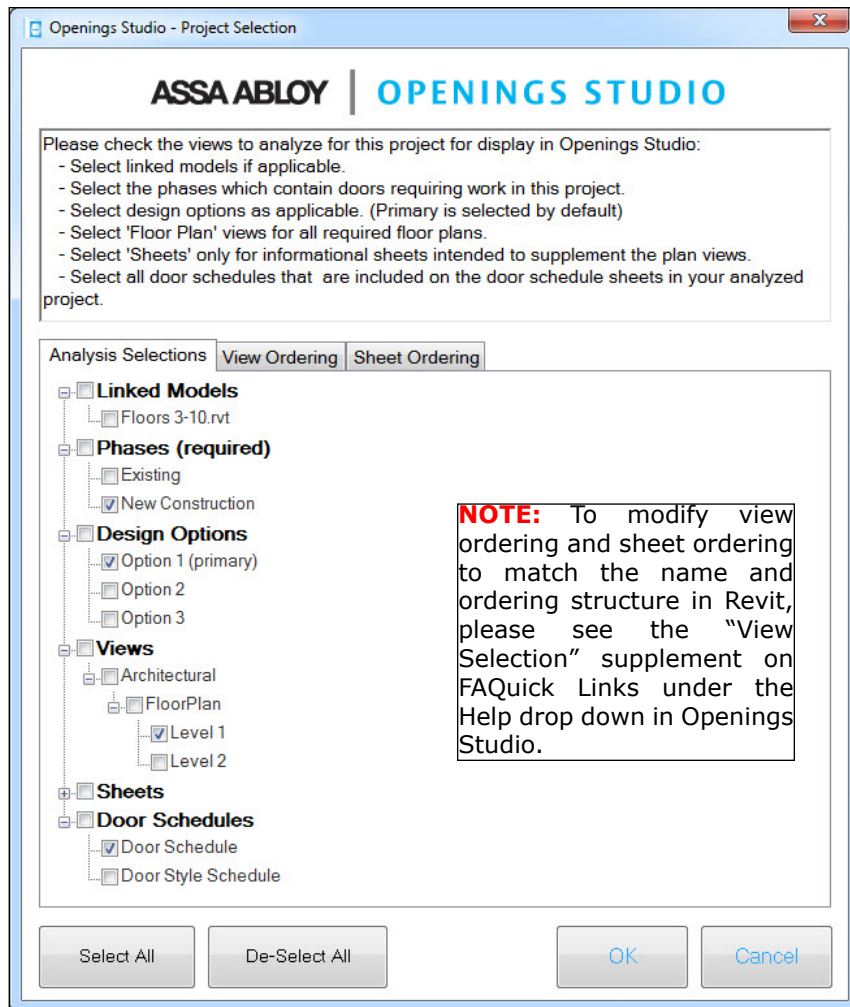


2. A dialog box will appear to verify continuing with the analyzing process. If you are 're-analyzing' a project, it may be necessary to first perform an 'Export to Revit' procedure. Exporting to Revit will import any recent door opening modifications made in Openings Studio by you or your consultant back into Revit before this information is possibly overwritten or replaced with a re-analyzing procedure. If an import is not required, select 'Yes' to continue and then login to your Openings Studio account.



3. A Project Selection window will appear for selecting floor plan views and sheets to be included in the transfer process to Openings Studio. Only the Views and Sheets (door and frame elevations, door schedule, etc) typically provided to your consultant to supplement the door and hardware specification process need to be selected. A 3D building view of the Revit model will be sent automatically regardless of the views and sheets selected.

Linked models with doors, phases design options, and door schedules may be selected as well. Selecting a phase is the only part of Project Selection screen that is actually required for the analysis to process.



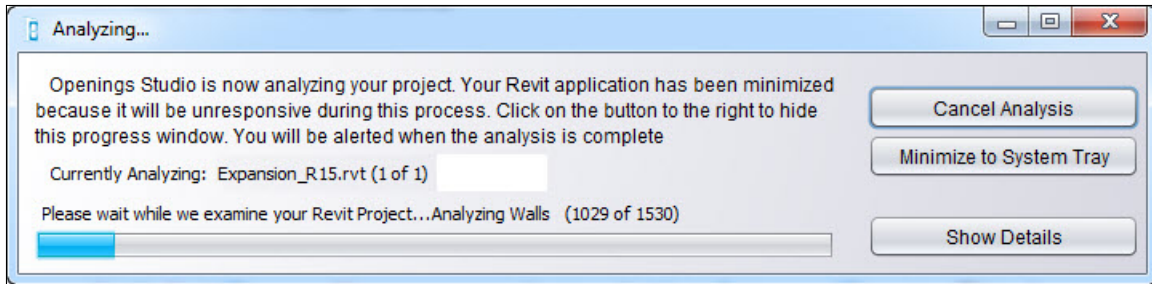
New Feature Available!


In Revit 2015 and newer, the Project Selection screen added a door schedule section.

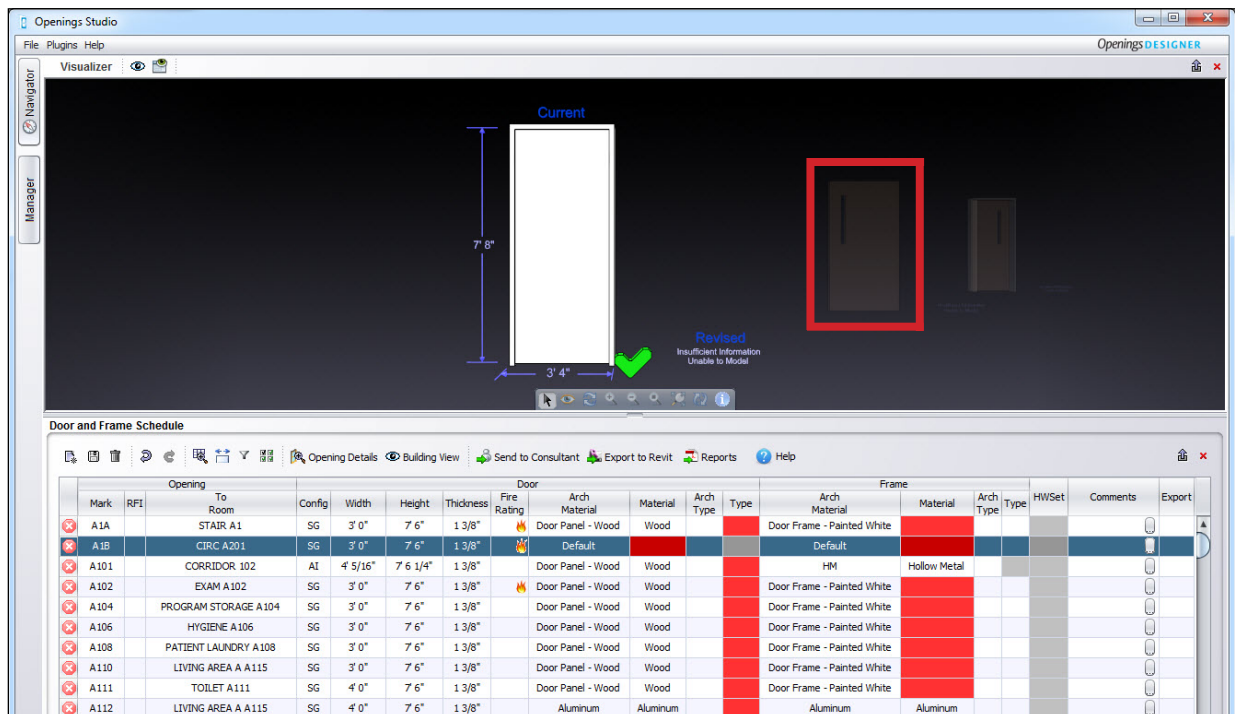
Selecting the door schedules on the Project Selection screen that are also on the printed sheet(s) will give the consultant the ability to easily map and compare the Openings Studio door schedule against the Revit door schedule for improved communication and accuracy.

Openings Studio will automatically build a door schedule whether a door schedule is selected or not, but it is very helpful to have the Revit version as well.

4. Press OK. Openings Studio will begin analyzing the Revit project and transmitting details to the application server. Depending on the number of openings, plans and drawings being transmitted, the Analyze process may take several minutes to complete. Click the "Show Details" button to see the analysis of the model. During this process, Revit will be unresponsive and minimized to the system tray.

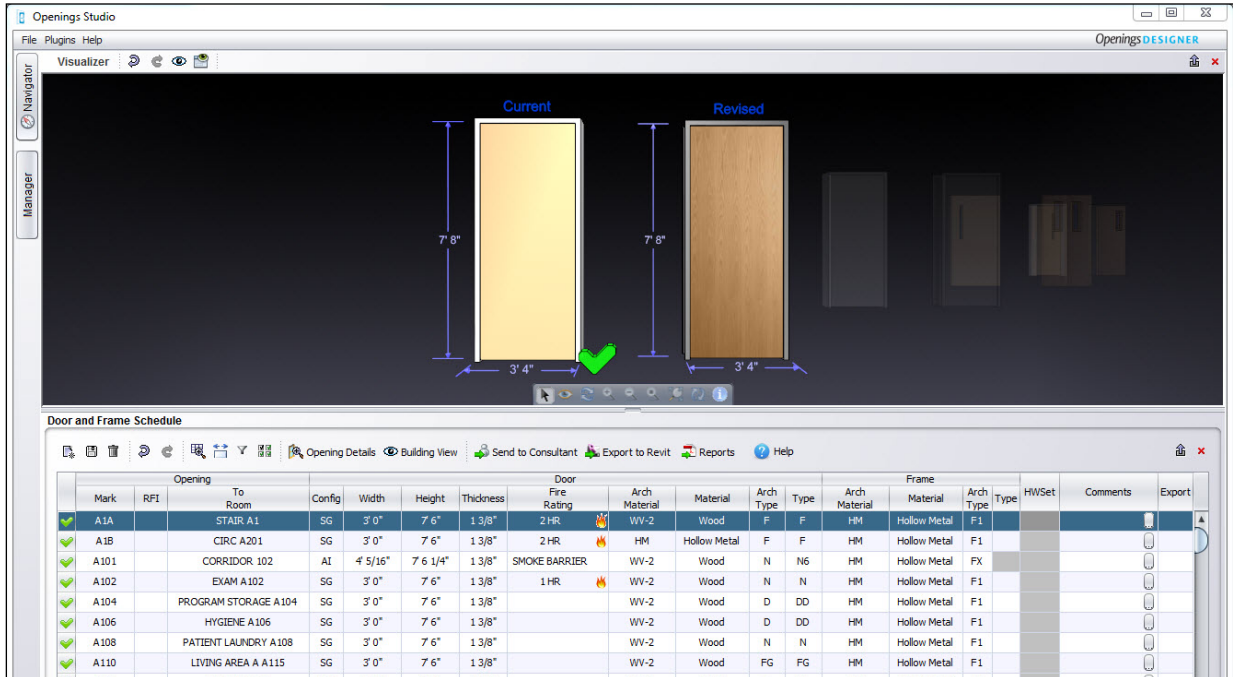


7. When the analysis is complete, 'Current' opening models as imported from the Revit project are displayed in the Visualizer and Door Schedule. Navigate through the openings from within the Visualizer by clicking on the shadowed door in the right background, or by highlighting a Mark number in the Door Schedule and using the up/down arrow keys. Selecting the  icon will sort the doors in order.

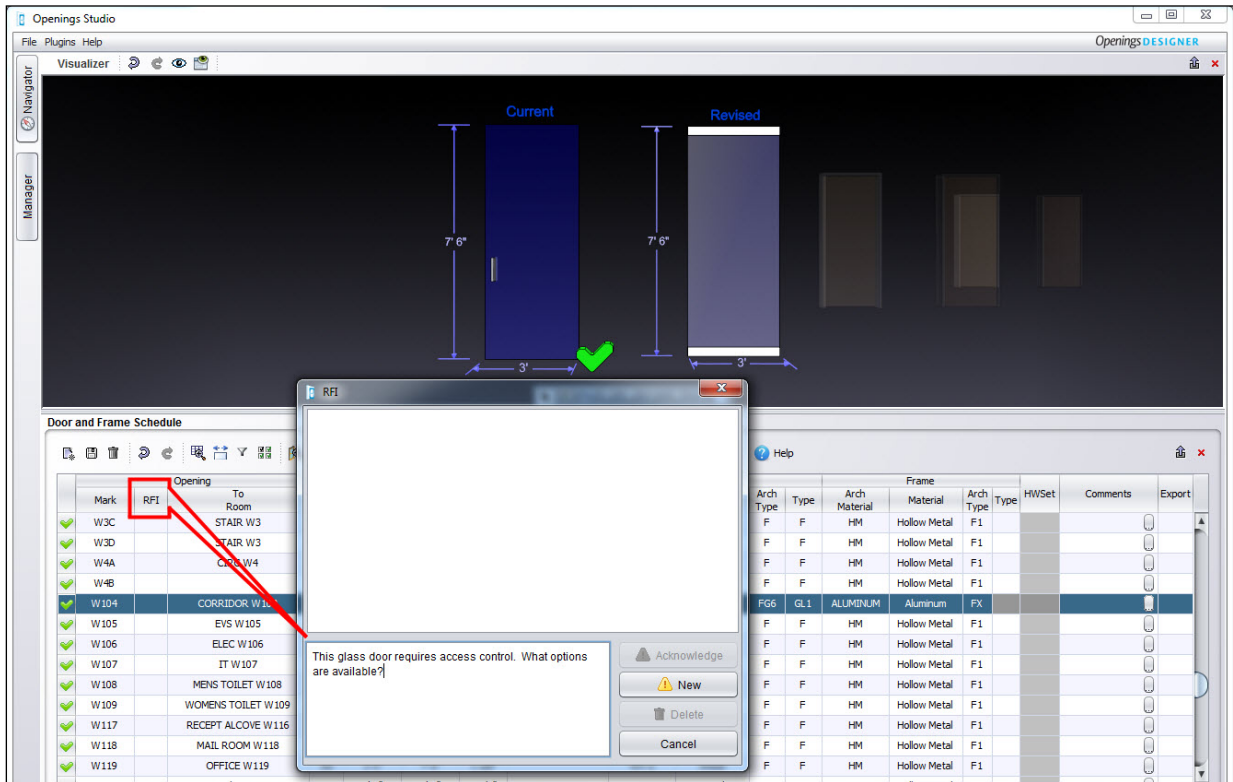


NOTE: If Openings Studio Door Families are NOT used in the design process, there will likely be RED cells in the Door Schedule and Insufficient Information note on the Revised side in the Visualizer. Information and mapping for these 'missing' parameters will need to be addressed by you and your consultant.

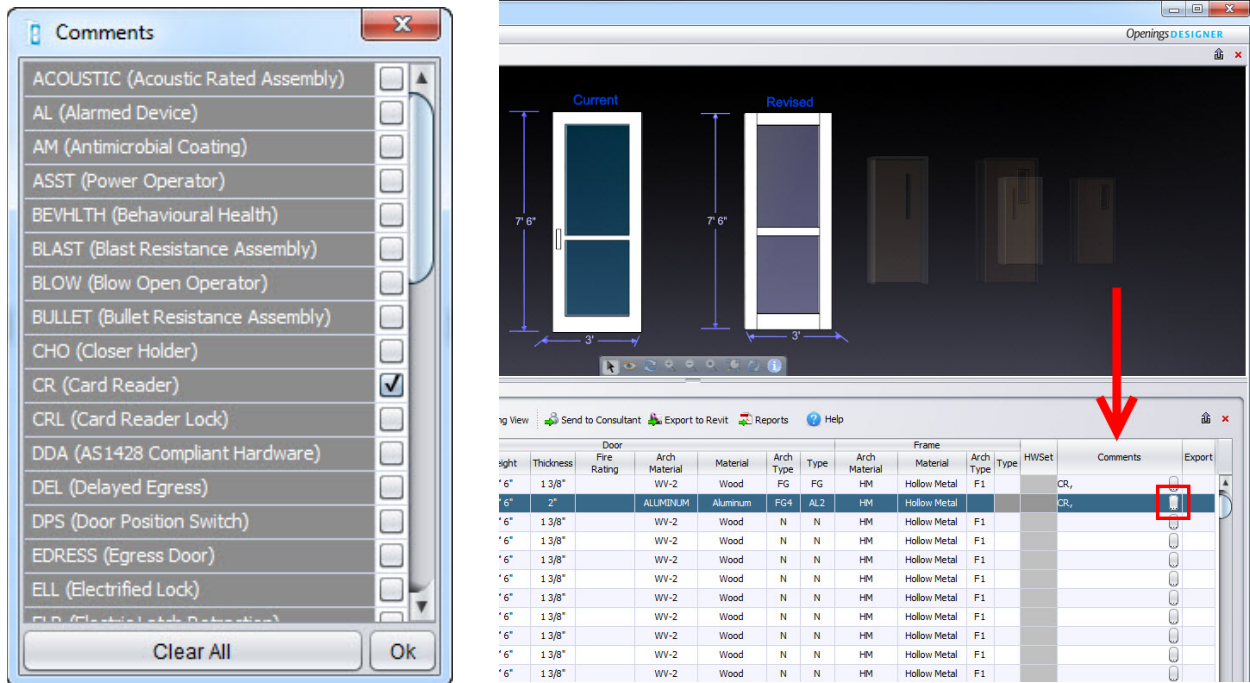
8. Once all of the required cells in the Door Schedule are correctly mapped and/or filled in by you or your consultant, then a 'Revised' door opening model will be displayed next to the 'Current' version.



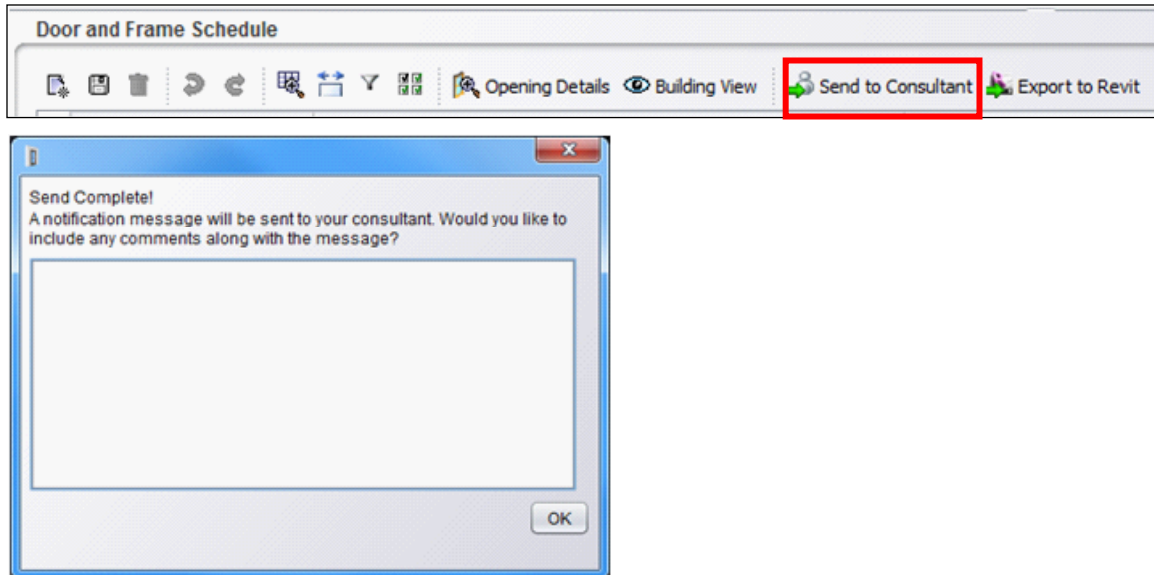
9. The RFI column can be used to convey questions or additional information about a specific opening to or from your consultant. RFIs are dated and time stamped with the authors name.



10. The pop-up button on the right edge of the Comments column can be used to add notes to be sent back to Revit. Remarks intended for the consultant should be left in the Specifier Remarks, a hidden column that is reveal by right click in the door schedule and viewing the Column Visibility Setup.



11. An automatic email will be sent to your ASSA ABLOY consultant once the analyze is complete. Press the **Send to Consultant** button to send an email message to your consultant informing them of specific instructions or additional comments related to the door and hardware specification preparation.



Your consultant will now begin the process of updating the opening models and adding basis-of-design parameters for material, type, construction, vendor, pricing, and more for your review. Further information on making door schedule changes and the exporting process is covered under AAOS Standard Operating Procedures - "Door Schedule Modifications" and "Exporting/Importing a Project".